



BATHROOM WALL PANELS

2019 COLLECTION

 PERLA



LOOKS NEW FOR YEARS

EASY TO CLEAN & MAINTAIN

FAST & EASY TO INSTALL

REAL LAMINATE SURFACE

NEAT JOINTING SYSTEMS

LESS EXPENSIVE THAN TILING

HYGIENIC

NO DIRTY GROUT

LOW MAINTENANCE



## BATHROOM WALL PANELS

An Alternative to Ceramic Tiles in the Bathroom

PERLA Bathroom Wall Panels transform a bathroom with beautiful and highly practical large format decorative surfaces.

With a wide range of new types of design from stones to abstract, plain colours to distressed finishes we offer you a real alternative to traditional tiling - with all the advantages offered by a hard-wearing real laminate surface.

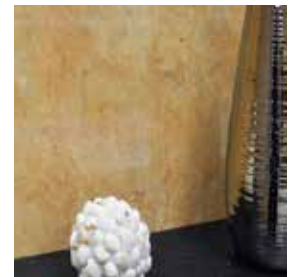
Thanks to their large format melamine surface, panels are easily kept spotless with a simple wipe with a shower-shine product with no dirty grouting to maintain.

Already have tiles? Panels can simply be installed over existing wall coverings using our system of profiles or our interlocking tongue and groove, offering a massive saving in time, cost and disruption.

Panels are easily installed by joiners or DIY professionals with no wet adhesive or grout drying times. Sub-walls need no preparation such as re-plastering or skimming since the panels can simply be installed over any damaged finishes.

Real laminate wall panels offer features which makes your investment outlast other panelling materials with a durable, easy to clean melamine surface which unlike PVC will not crack, flex or deteriorate over time.

Perla Bathroom products offer the highest standards in quality, performance and are manufactured in the UK to exacting standards.







Gloss Texture  
 Matt Texture  
 Stone Texture



- 1. Black Slate: P13
- 2. Arctic: P41
- 3. Grey Stratus: P25
- 4. Pumice: P37
- 5. Grained Marble: P24
- 6. Highland Slate: P36
- 7. Rusty Metal: P38
- 8. Jurassic: P40
- 9. Raw Concrete: P42
- 10. Limestone: P14
- 11. Tuscan Stone: P20

PRICE GROUP 3





*Grey Slate*



*Black Slate*





1





Gloss Texture  
Stone Texture  
Textile Texture



1. Crystal White: P19
2. Linea White Stripe: P06
3. Linea Grey Stripe: P49
4. Linea Black Stripe: P07
5. Pearl White: P09
6. Pearl Bronze: P11
7. Taupe Linen: P50
8. Grey Linen: P51
9. Crystal Basalt: P21
10. Crystal Sand: P23



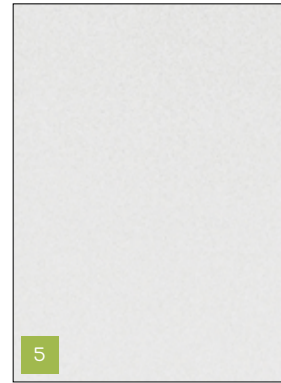
2



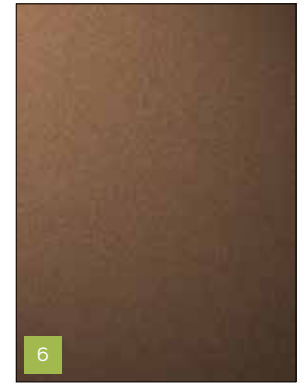
3



4



5



6



10



9



7



8

PRICE GROUP 3



*Crystal Basalt*



*Pumice*







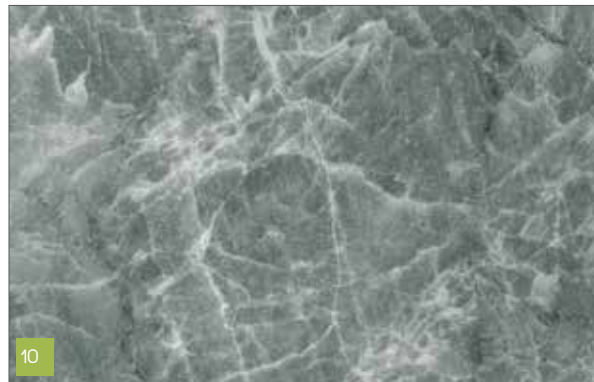
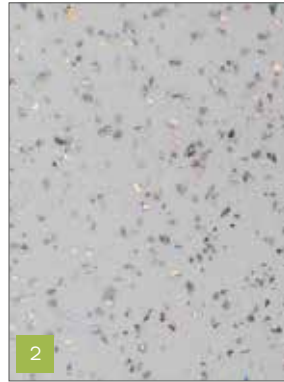
1



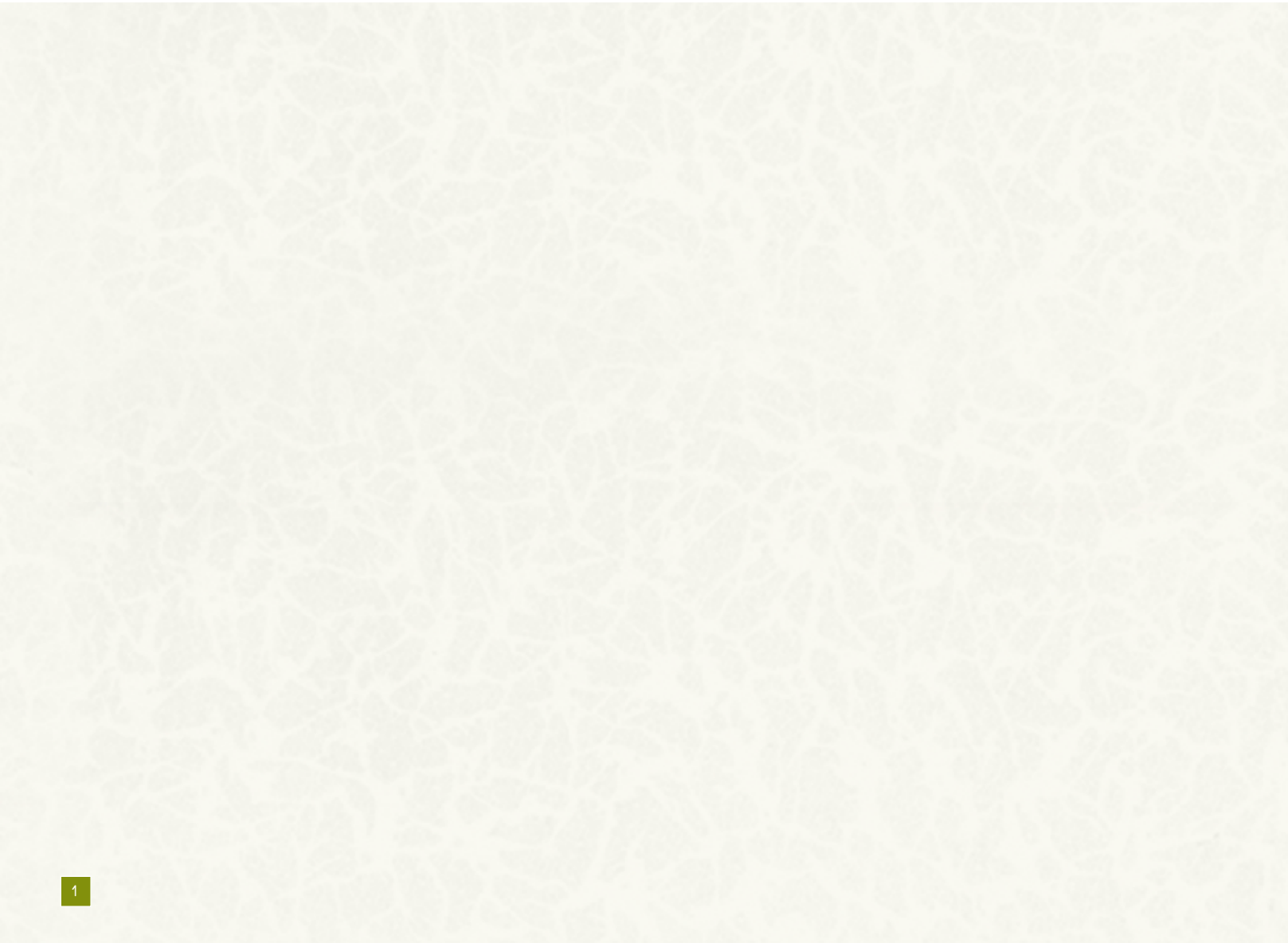
Gloss Texture



- 1. Travertine: P30
- 2. White Star: P02
- 3. Black Star: P01
- 4. Zebrano: P27
- 5. Bronze Slate: P29
- 6. Grey Slate: P28
- 7. Quartzite Black: P18
- 8. Quartzite Brown: P15
- 9. Transcend: P03
- 10. Dark Marble: P53
- 11. Italian Marble: P54



PRICE GROUP 2



1

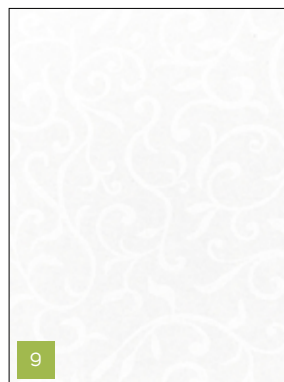
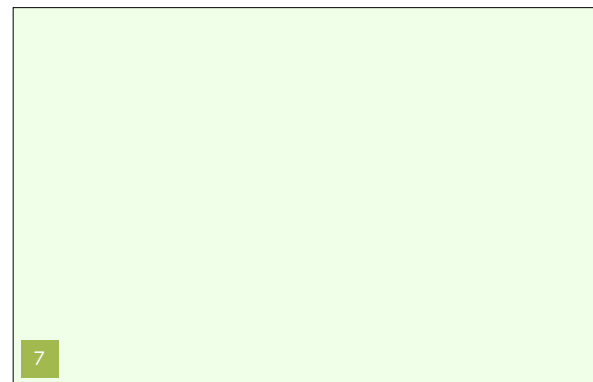
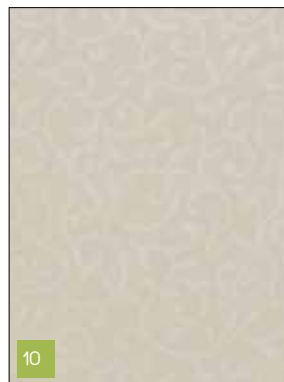
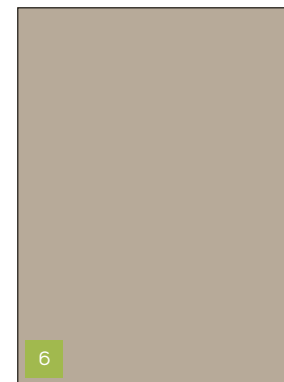
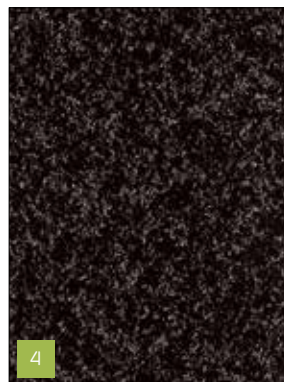




Gloss Texture



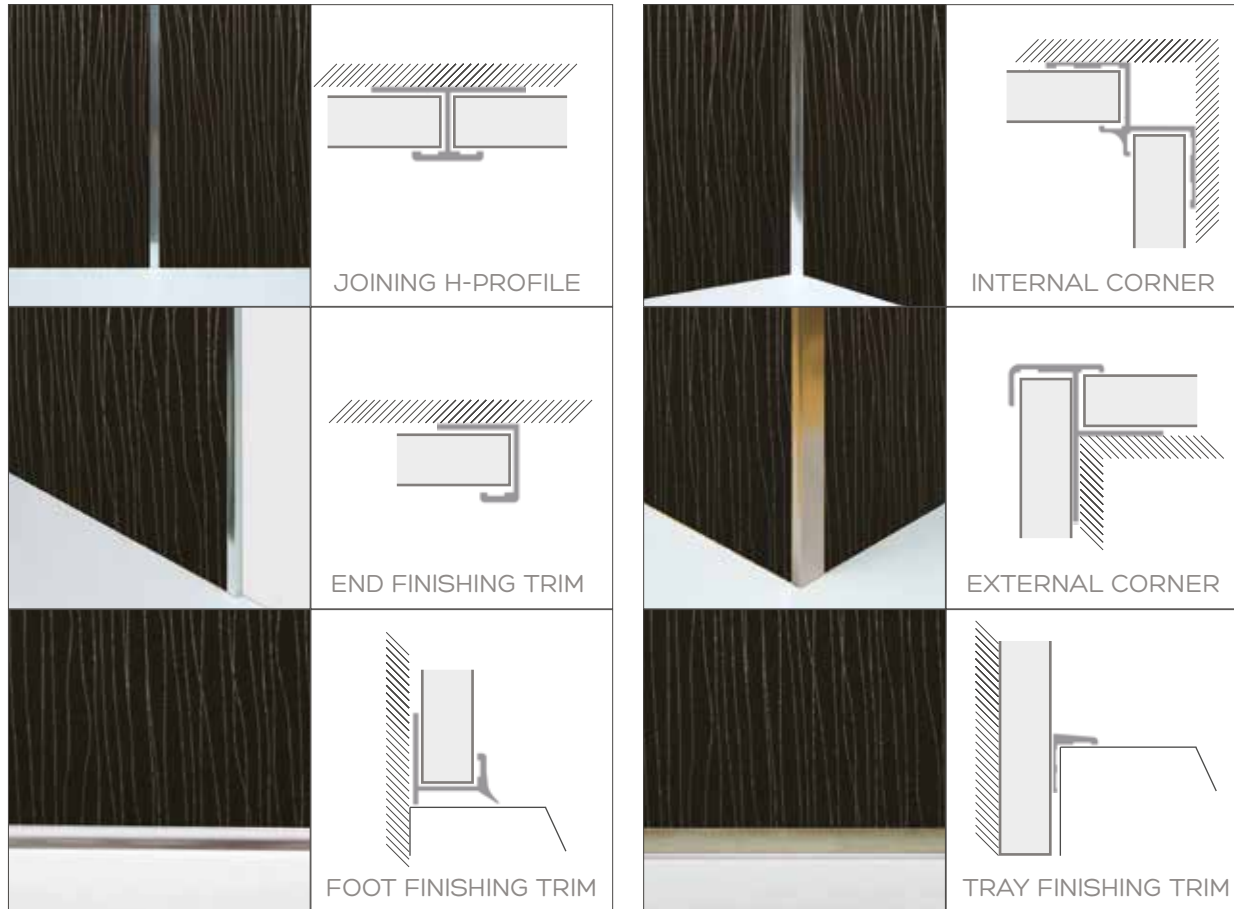
- 1. Metallic White: P35
- 2. Glacier: P59
- 3. Silver Grey: P45
- 4. Metallic Black: P44
- 5. Element White: P26
- 6. Taupe: P39
- 7. Aqua: P43
- 8. Bahama: P56
- 9. Silver Leaf: P04
- 10. Gold Leaf: P05
- 11. Madison: P31
- 12. Harlem: P34
- 13. Broadway: P32



PRICE GROUP 1

# SYSTEM PROFILES

Square edged panels are joined using a system of aluminium profiles in four finishes



Use the foot finishing trim or tray finishing trim to give a clean finish to the sealing silicone required to maintain a water-tight seal. The aluminium trim means that the silicone is not damaged over time.



Profiles available in chrome, satin, black & white





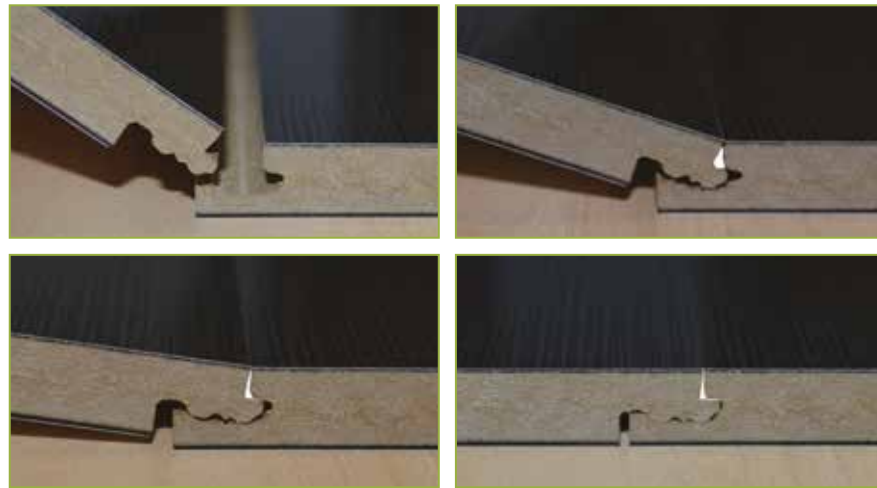
## INTERLOCKING JOINT

A smooth profile-free surface using our tongue and groove system

Often when panels are required to cover a larger area the profile-less joint of our interlocking tongue and groove becomes a required feature.

Locking tightly together without any joining strips means that the highly decorative surfaces can be used continuously with only a slight line visible between panels. This is ideal when panelling large areas to give a near seamless appearance next to a bath or large format shower tray.

All joints must be sealed using a high performance silicone sealant such as Perla Seal2Wall which can also be used to secure the panels to the wall and is available in both clear (for profiles) and white.





## PERFORMANCE

Perla Panels are manufactured using the finest quality materials and profiled by highly trained machinists to ensure extremely tight manufacturing tolerances. Panels are thoroughly inspected throughout the manufacturing process and are quality checked and passed to be in the best possible condition when they leave the factory.

### Laminate Surface:

The surface of a Perla Panel is a high pressure laminate which is familiar as a kitchen work surface. Laminate is the perfect hard surface material for a bathroom panel since its smooth high gloss texture resists any germ growth and gives a beautiful easy to clean surface finish which is extremely easy to maintain.

### MDF Core:

The standard core for Perla is a 9mm moisture resistant MDF which offers a perfectly flat surface for a ripple-free finished product. The moisture resistant MDF core is designed for use in humid conditions in accordance with MDF.H (Option 1) as defined in EN 622-5 so is ideal for applications in bathrooms.

This core is extremely stable and resistant with a high level of consistency and excellent environmental accreditation being sourced in Europe and manufactured largely as a complementary product from the timber industry.

### Plywood Core\*:

Plywood is an optional traditional core material for panels with Perla, when its properties of strength and reliability are preferred. We use a high quality 9mm WBP plywood grade sourced responsibly from Asia. Plywood forms an ideal surface for laminated panels since it is very stable and gives an excellent flat surface with high bond strengths and resistance to moisture. The 9mm core is the perfect substrate since it is accurate to machine, recyclable and has been audited and found to meet the requirements of standard(s) FSCSTD-40-004 (Version 2.1) EN and FSC-STD-50-001 (Version 1.2) EN for FSC® Chain of Custody Certification.

\*special order





## SPECIFICATION

### Formats:

2400 x 1200 x 11mm Standard Square Edged  
2400 x 900 x 11mm Standard Square Edged  
2400 x 1185 x 11mm Interlocking Tongue & Groove  
2400 x 885 x 11mm Interlocking Tongue & Groove  
2400 x 585 x 11mm Interlocking Tongue & Groove

### Construction:

Top Layer: High Pressure Decorative Laminate  
Core: MR MDF or Plywood\*  
Reverse Layer: Balancing Laminate

### Profile System:

Anodised/Coated Aluminium Extrusions in Chrome, Satin, White & Black  
Length: 2440mm

### Installation:

Installation is completed using a system of aluminium profiles including an internal corner profile, an H-joint for connecting two square edged panels, an end finishing profile and an external corner profile. Also available are a shower finishing trim and bottom/top profile.

### Care & Maintenance:

There is no maintenance of the panels required although it is advised to keep the seal at the base of a shower or around a bath clean and intact. Panels can be kept as new using a regular cleaning regime using standard shower shine products.

Using the same surface material as a kitchen worktop, the hygienic melamine surface of the panels can be kept as good as new with only gentle cleaning using non-abrasive cleaning products.



Also in the Perla Bathroom Range:

PERLA PRO: Contract Bathroom Wall Panels

PERLA SPACE: Contract Bathroom Furniture

PERLA INTEGRA: Integrated Bathroom Furniture

PERLA LINEA: Fusion Bathroom Furniture

PERLA ACCOMMODATION: Complete Bathroom Interior Service

Visit: [www.perlabathrooms.com](http://www.perlabathrooms.com)

 PERLA

JTC FURNITURE GROUP  
Manhattan Works  
Dundee  
DD3 7PY  
01382 443555

